

FEATURES

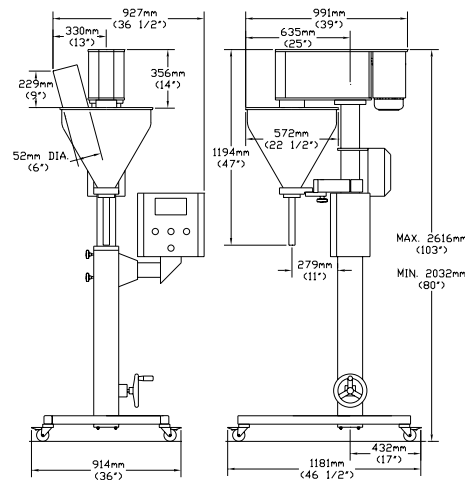
- Stainless steel hopper, 16 gallons (60 liters) capacity.
- Low speed motorized dual agitator.
- **VECTORMOTION™** drive system to drive the feed screw.
- Continuously programmable variable speed of feed screw, from 220 to 1300 rpm.
- Speeds up to 75 cycles per minute.
- Nema 4 control panel with programmable operator interface.
- Programmable controller.
- Maintenance free unit.
- Stand alone unit mounted on a tubular steel stand protected with electrostatic paint, adjustable in height by means of a hand wheel.
- Four castors or optional leveling pads.
- OEM unit mounted on a flanged column.

TORNADO 600

TECHNICAL DATA TORNADO 600

Main drive motor	Standard TEFC 1 1/2 HP, 1800 rpm, 208/230 Volts, 3 phase, 60Hz
Agitator drive motor	3/4 HP, 220 Volt, 58 rpm with gear reduction
Hopper	Stainless steel, 22" straight side, 16 gallons capacity (60 liters)
Cycling speed	Up to 75 cycles per minute
Speed of feed screw	Continuously programmable from 220 rpm to 1300 rpm
Power supply	208/220 Volts, single phase, 10 Amps, 50/60 Hz

Machine specifications may change without notice.



TORNADO 600

Made in Canada with pride by
ARTYPAC AUTOMATION INC.

ARTY-PAC

... The efficiency of simplicity

TORNADO 600

Vectormotion™ Drive System

- The **TORNADO 600** is an innovative auger-filler using **VECTORMOTION™** technology to drive the filling screw.
- **Programmable speed** of feed screw to obtain the **ideal conditions** depending on product type and fill size .
- Control panel is a **dust proof enclosure** containing the programmable controller and **user-friendly operator interface** mounted on a convenient swivel arm.
- 99 memory locations to store and retrieve product settings is a standard feature.
- Provides **excellent accuracy** filling ground coffee, flakes, spices, and all kinds of free flowing and non-free flowing powders and granules at speeds **up to 75 cycles per minute**.
- Tubular stand equipped with **fast height adjustment** hand wheel to conform to the height of the containers.
- It can be used as a stand-alone unit or integrated with many packaging systems such as: horizontal and vertical form-fill-seal machines; cartoning machines; conveyors...
- Indexing units, bottom-up-filling unit, conveyors and turn tables are available options.
- All stainless steel base optional.

Maintenance-free unit

Continuously Variable speed with a touch of a button

Excellent accuracy

99 memory locations to store and retrieve product settings

Nema 4 control panel with programmable operator interface

Innovative ideas for today's changing markets



VECTORMOTION™ is a maintenance-free drive system created by ARTYPAC to eliminate the need of wearable clutch/brake mechanism and avoid the costs and complexity of servo drives.

... The efficiency of simplicity